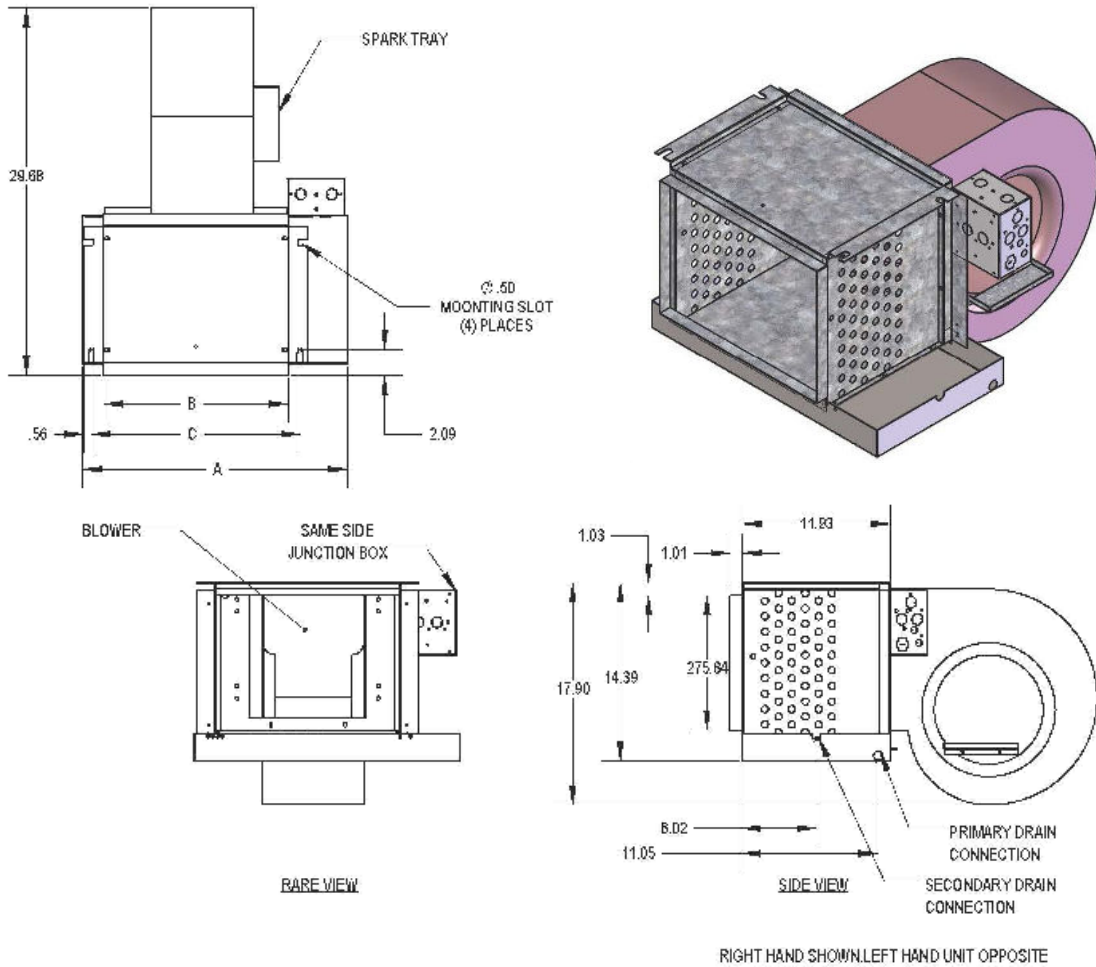


HIGH PERFORMANCE HORIZONTAL BASIC

HH-B / 600 - 1,200 CFM

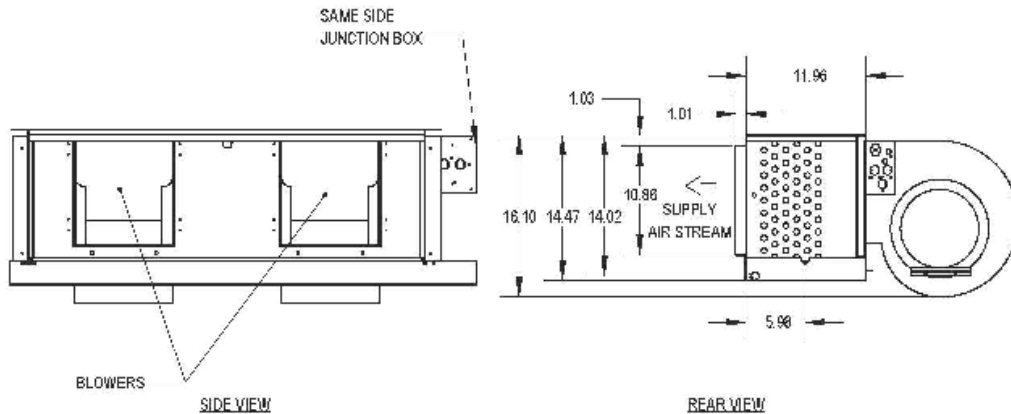
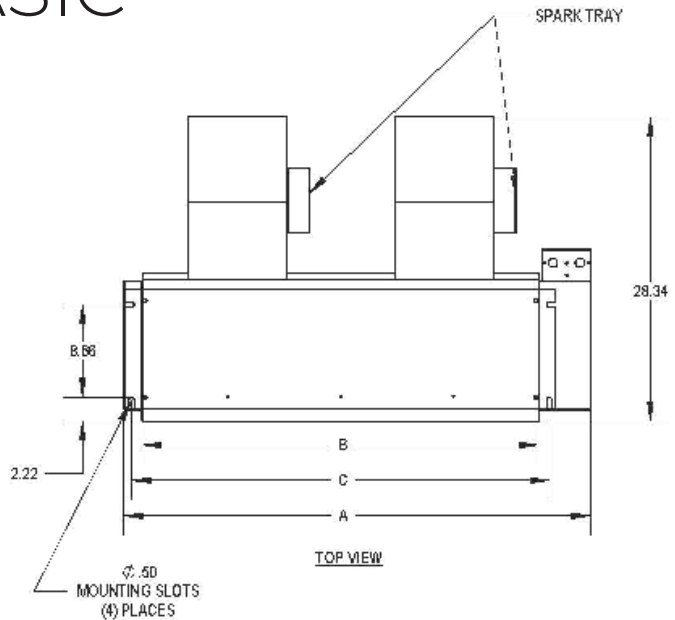
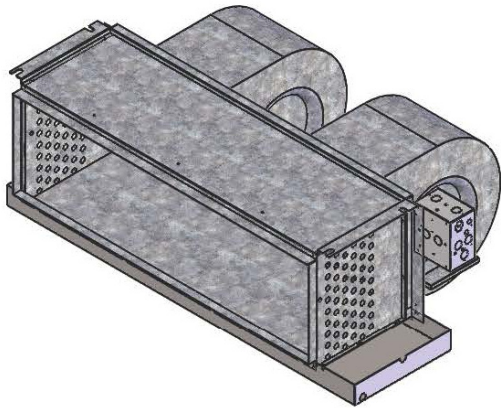


MODEL BASIC	A	B	C	BLOWER
600	21-1/2	15	16-3/4	1
800	25-1/2	19	20-3/4	1
1000	31-1/2	25	26-3/4	1
1200	37-1/2	31	32-3/4	1

- All sizes shown in inches.
- Right hand unit shown, left hand unit opposite.
- Coil connections determined by facing the supply air opening.
- Electrical junction box is located on the same side as the coil connections.
- Unit must be installed level and condensate drain lines should be trapped.
- Drain pan is powder coated epoxy with a 1/8" thick closed-cell insulation and has 3/4" NPT primary and secondary drain connections.
- Entire cabinet, scroll and blower wheel are heavy-gauge, galvanized steel.
- Coil connections: 1/2" CW on HH-006, 3/4" CW on HH008-012 and 1/2" HW on HH006-012.

HIGH PERFORMANCE HORIZONTAL BASIC

HH-B / 1,500 - 2,200 CFM



RIGHT HAND SHOWN, LEFT HAND OPPOSITE

MODEL BASIC	A	B	C	BLOWER
1500	43-1/2	37	38-3/4	2
1800	49-1/2	43	44-3/4	2
2200	55-1/2	49	50-3/4	2

- All sizes shown in inches.
- Right hand unit shown, left hand unit opposite.
- Coil connections determined by facing the supply air opening.
- Electrical junction box is located on the same side as the coil connections.
- Unit must be installed level and condensate drain lines should be trapped.
- Drain pan is powder-coated epoxy with a 1/8" thick closed-cell insulation and has 3/4" NPT primary and secondary drain connections.
- Entire cabinet, scroll and blower wheel are heavy-gauge, galvanized steel.
- Coil connections: 3/4" CW on HH015-022, and 1/2" HW on HH015-022. 1/2" HW on HH015-022.