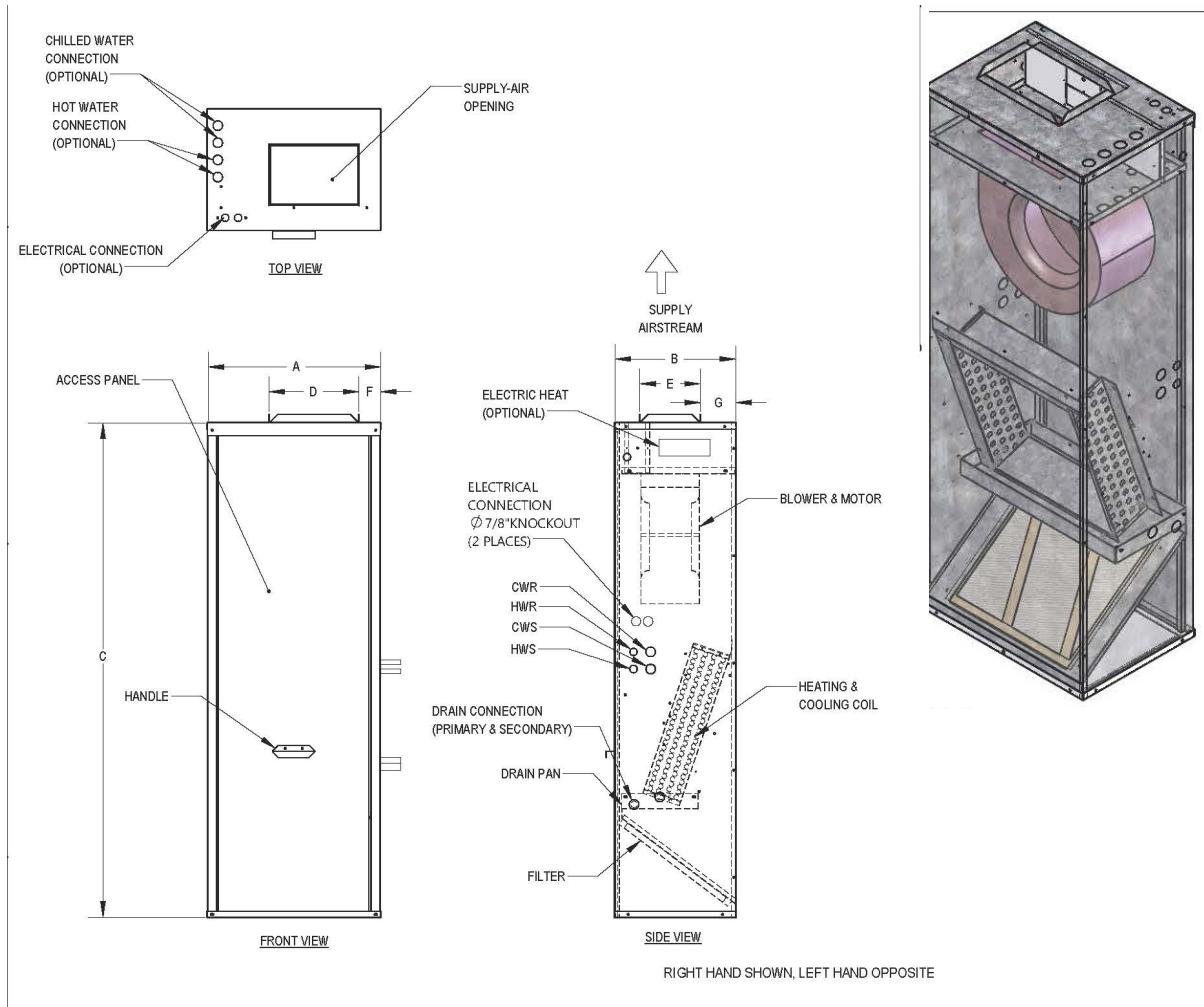


HIGH PERFORMANCE CASED VERTICAL

CV-B/D CASED CLOSET BASIC BOTTOM RETURN

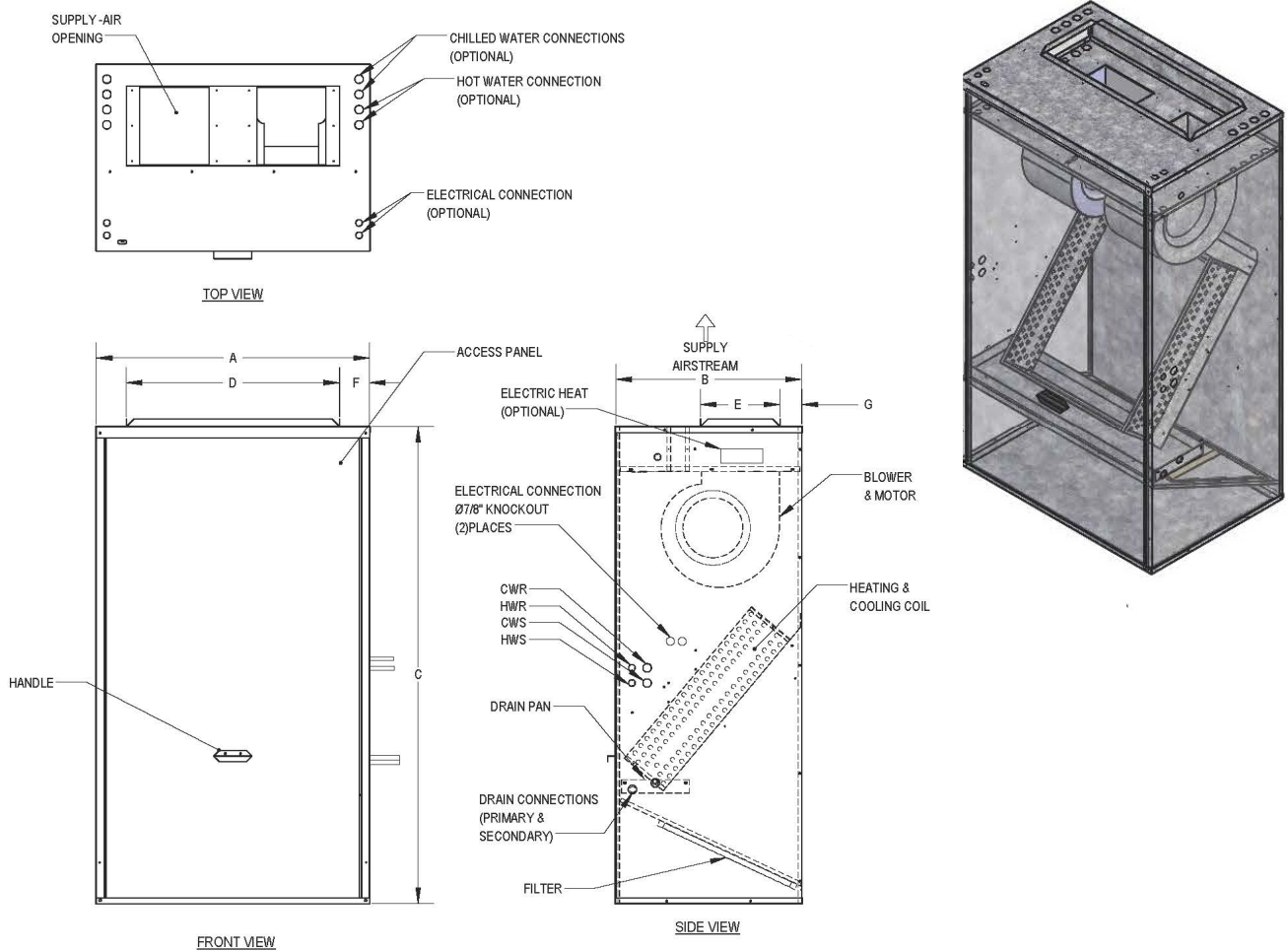
400 - 800 CFM



MODEL CV-B/D	A	B	C	D	E	F	G	FILTER SIZE
400	20-5/32	14-5/32	57-5/8	10-15/32	7-3/32	2-7/32	3-1/32	16 X 16 X 1
600	20-5/32	14-5/32	57-5/8	10-15/32	8-15/32	2-7/32	3-1/32	16 X 20 X 1
800	20-5/32	14-5/32	57-5/8	10-15/32	9-13/32	2-7/32	3-1/32	20 X 20 X 1

- Right hand unit shown, left hand unit opposite.
- Coil connections determined by facing the front access panel.
- Electrical junction box is located on the same side as the coil connections.
- Unit must be installed level and condensate drain lines should be trapped.
- Drain pan is powder coated epoxy with a 1/8" thick closed-cell insulation and has 3/4" NPT, primary and secondary drain connections.
- Entire cabinet, scroll and blower wheel are heavy gauge, galvanized steel.
- Coil connections: 1/2" CW and HW on CV004-008.

HIGH PERFORMANCE CASED VERTICAL CV-B/D CASED CLOSET BASIC BOTTOM RETURN 1,000 - 2,200 CFM



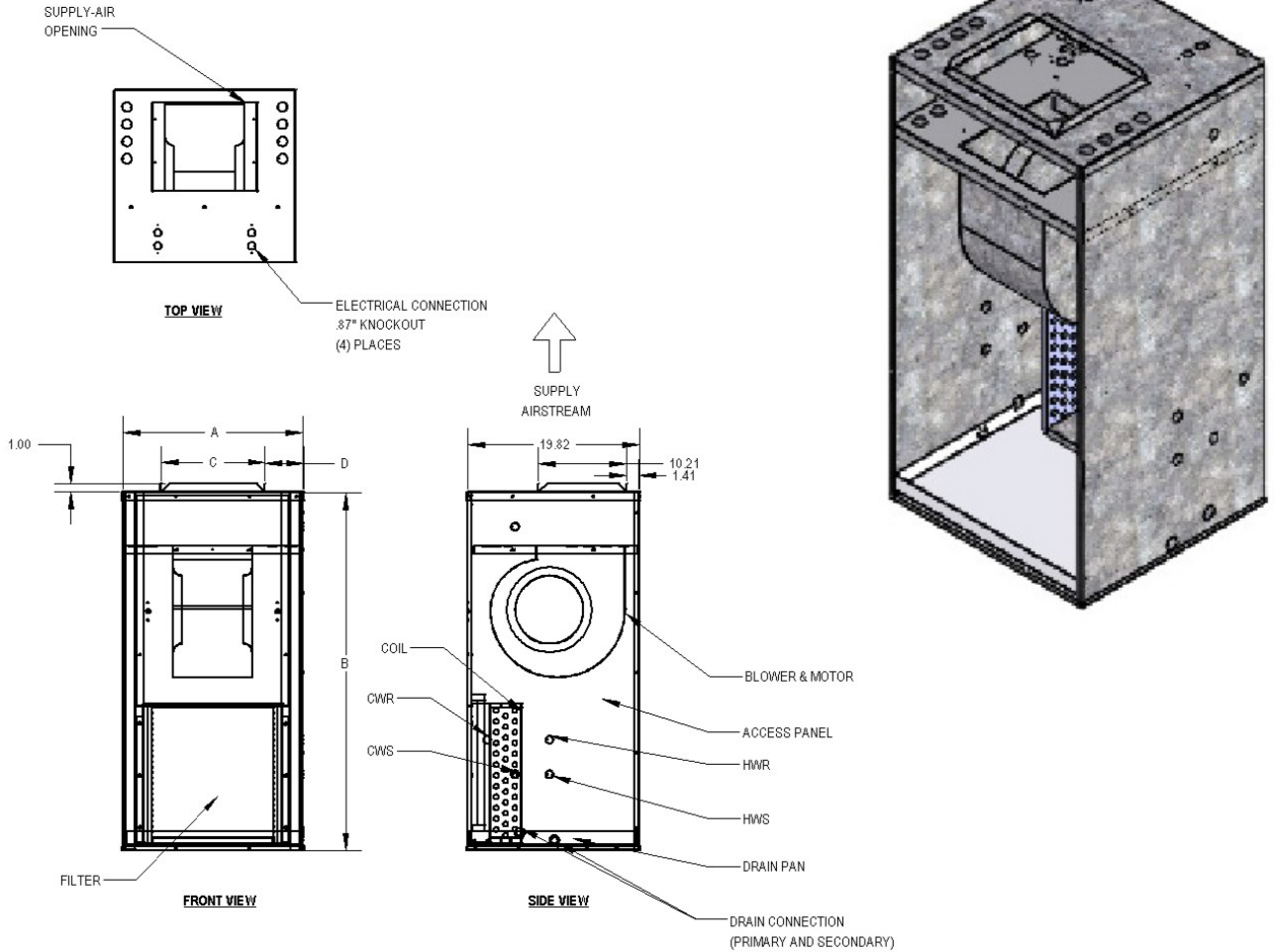
MODEL CV-B/D	A	B	C	D	E	F	G	FILTER SIZE
1000	20-3/8	20-3/8	57-3/8	10-3/8	12	2-3/8	3-1/16	20 x 20 x 1
1200	20-3/8	20-3/8	57-3/8	10-3/8	12	2-3/8	3-1/16	20 x 20 x 1
1500	36	24-5/8	62-3/4	10-1/2	24	3	3	30 x 24 x 1
1800	36	24-5/8	62-3/4	10-1/2	24	3	3	30 x 24 x 1
2200	36	24-5/8	62-3/4	10-1/2	24	3	3	30 x 24 x 1

- Right hand unit shown, left hand unit opposite.
- Coil connections determined by facing the front access panel.
- Electrical junction box is located on the same side as the coil connections.
- Unit must be installed level and condensate drain lines should be trapped.
- Drain pan is powder coated epoxy with a 1/8" thick closed-cell insulation and has 3/4" NPT, primary and secondary drain connections.
- Entire cabinet, scroll and blower wheel are heavy gauge, galvanized steel.
- Coil connections: 1/2" CW on CV010, 3/4" on CV012-022 and 1/2" HW on CV010-022.

HIGH PERFORMANCE CASED VERTICAL

CV-K/J FRONT RETURN

400 - 1,200 CFM



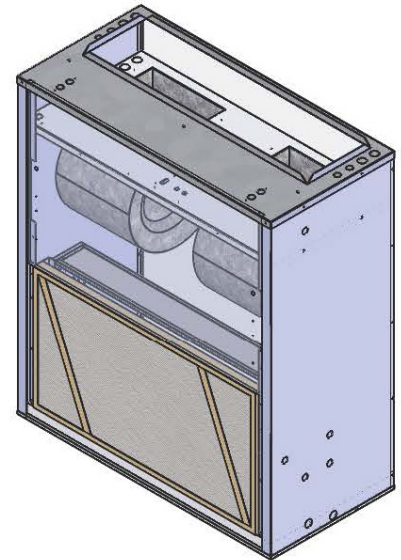
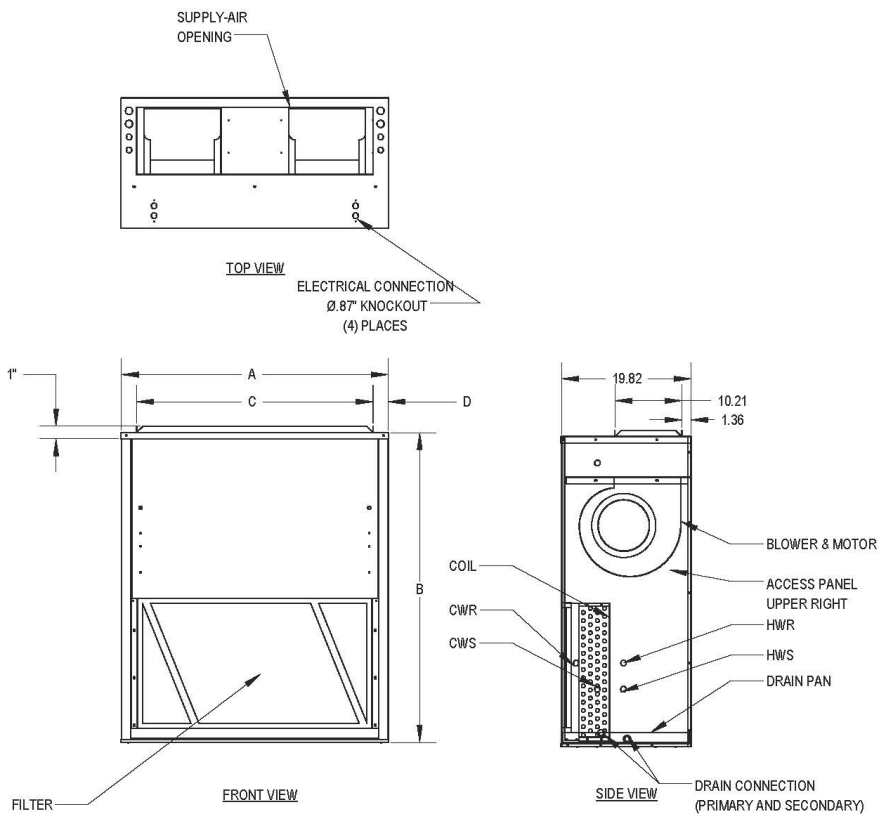
MODEL BASIC / DELUXE	A	B	C	D	E	F	G	FILTER SIZE
400	20-5/32	14-5/3	57-5/8	10-15/32	7-3/32	2-7/32	3-1/32	16 X 160 X 1
600	20-5/32	14-5/3	57-5/8	10-15/32	8-15/32	2-7/32	3-1/32	16 X 20 X 1
800	20-5/32	14-5/3	57-5/8	10-15/32	9-13/32	2-7/32	3-1/32	20 X 20 X 1
1000	20-11/32	20-5/16	57-5/8	10-3/8	11-15/16	2-1/8	3-1/16	20 X 20 X 1
1200	20-11/32	20-5/16	57-5/8	10-3/8	11-15/16	2-1/8	3-1/16	20 X 20 X 1

- All sizes shown in inches.
- Right hand unit shown, left hand unit opposite.
- Coil connections determined by facing the supply air opening.
- Electrical junction box is located on the same side as the coil connections.
- Unit must be installed level and condensate drain lines should be trapped.
- Drain pan is powder coated epoxy with a 1/8" thick closed cell insulation and has 3/4" NPT primary and secondary drain connections.
- Entire cabinet, scroll and blower wheel are heavy gauge, galvanized steel.
- Coil connections: 1/2" CW on CV004-008. 3/4" CW on CV010-012 and 1/2" HW on CU004-012

HIGH PERFORMANCE CASED VERTICAL

CV-K/J FRONT RETURN

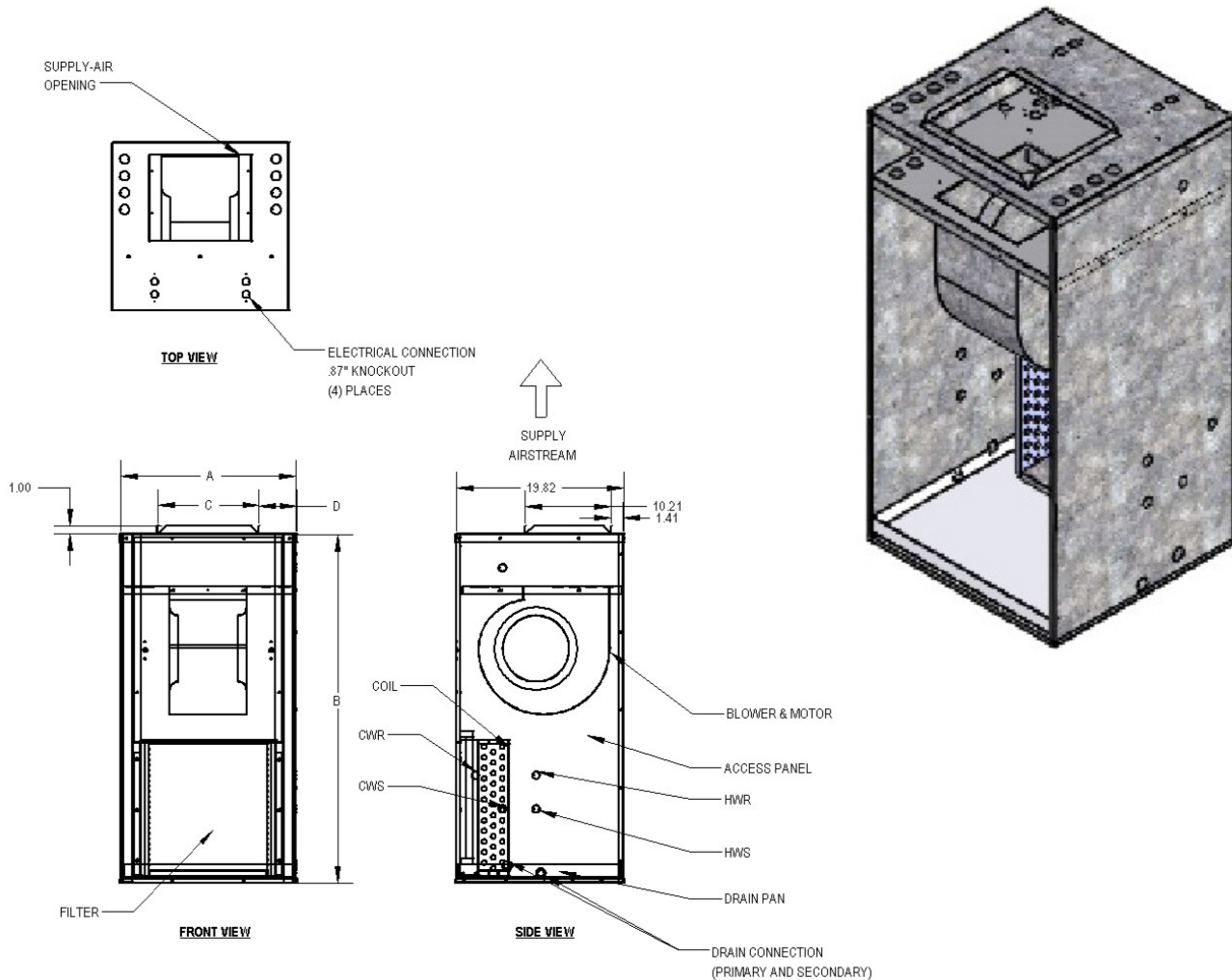
1,500 - 2,200 CFM



MODEL BASIC / DELUXE	A	B	C	D	E	F	G	FILTER SIZE
1500	36	24-5/8	62-3/4	24	10-1/2	3	3	30 X 24 X 1
1800	36	24-5/8	62-3/4	24	10-1/2	3	3	30 X 24 X 1
2200	36	24-5/8	62-3/4	24	10-1/2	3	3	30 X 24 X 1

- All sizes shown in inches.
- Right hand unit shown, left hand unit opposite.
- Coil connections determined by facing the supply air opening.
- Electrical junction box is located on the same side as the coil connections.
- Unit must be installed level and condensate drain lines should be trapped.
- Drain pan is powder coated epoxy with a 1/8" thick closed cell insulation and has 3/4" NPT primary and secondary drain connections.
- Entire cabinet, scroll and blower wheel are heavy gauge, galvanized steel.
- Coil connections: 1/2" CW on CV010, 3/4" on CV012-022 and 1/2" HW on CV010-022.

HIGH PERFORMANCE CASED VERTICAL CV-R FRONT RETURN / TOP SUPPLY



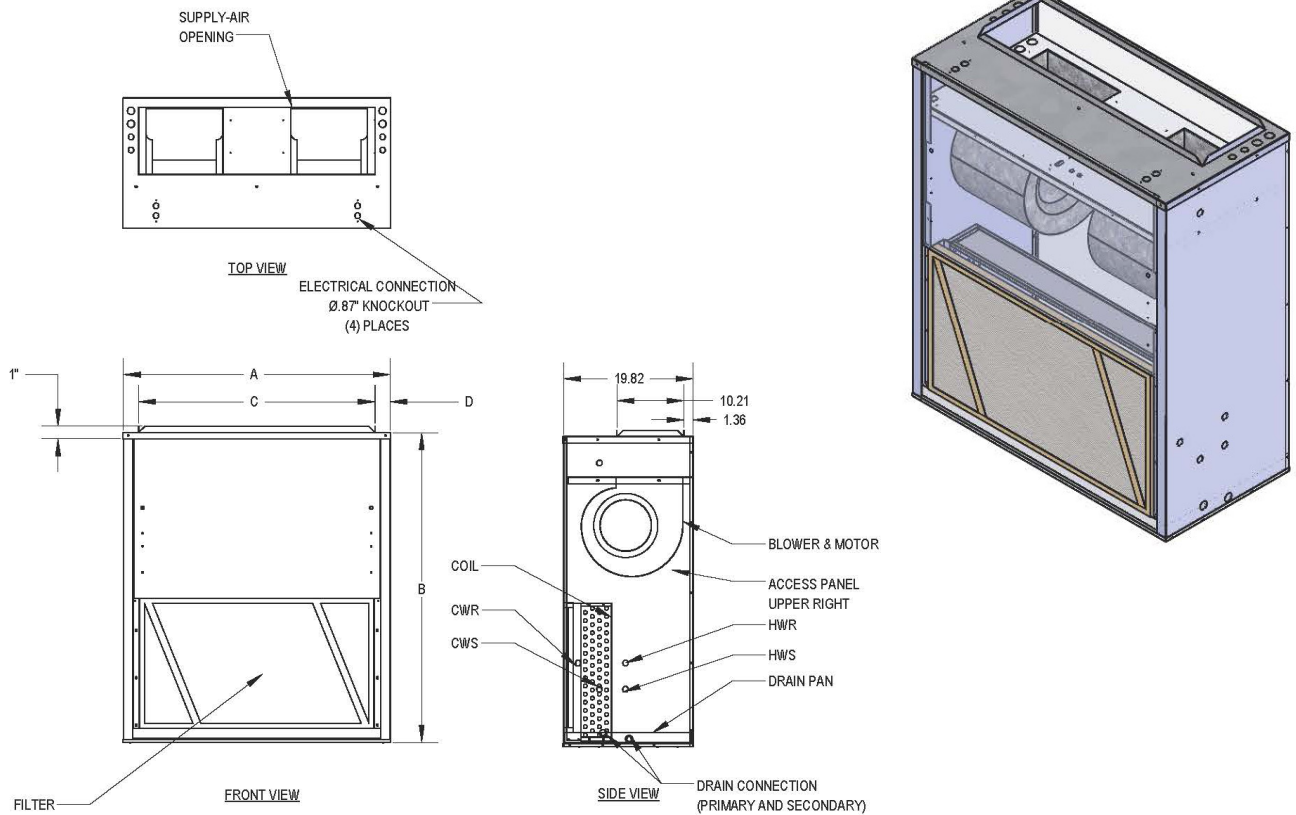
MODEL FRONT RETURN / TOP SUPPLY	A	B	C	D	E
600	21	42	12-1/4	4-3/8	16 x 16 x 1
800	25	42	12-1/4	6-3/8	16 x 20 x 1
1000	25	45	12-1/4	6-3/8	20 x 20 x 1
1200	30	45	12-1/4	8-7/8	20 x 256 x 1

- All sizes shown in inches.
- Right hand unit shown, left hand unit opposite.
- Coil connections determined by facing the supply air opening.
- Electrical junction box is located on the same side as the coil connections.
- Unit must be installed level and condensate drain lines should be trapped.
- Drain pan is powder-coated epoxy with a 1/8" thick closed cell insulation and has 3/4" NPT primary and secondary drain connections.
- Entire cabinet, scroll and blower wheel are heavy gauge, galvanized steel.
- Coil connections: 1/2" CW for CV006, 3/4" on CV008-012 chilled water, 1/2" HW on CV006-012 hot water.

HIGH PERFORMANCE CASED VERTICAL

CV-R FRONT RETURN / TOP SUPPLY

1,500 - 2,200 CFM



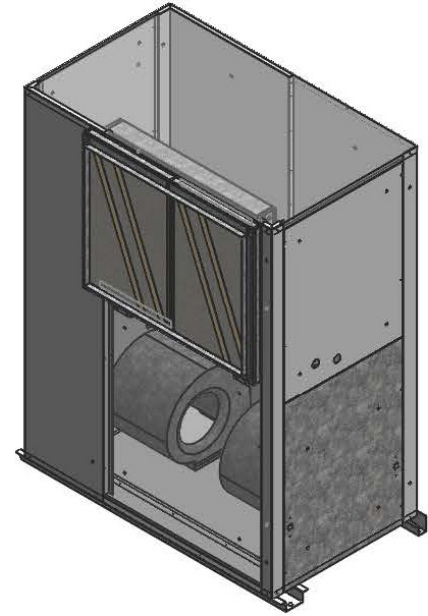
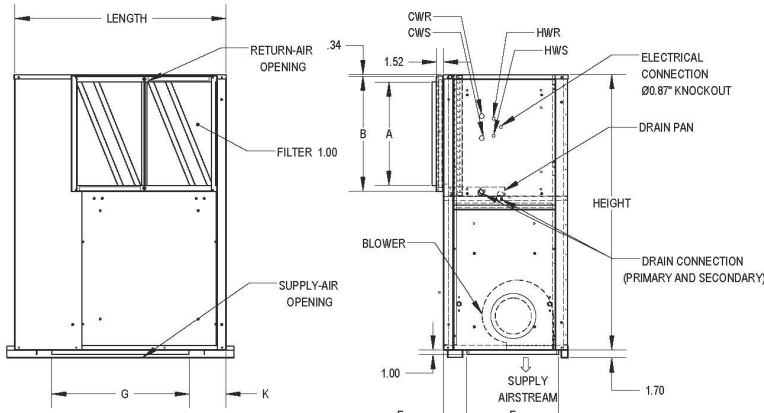
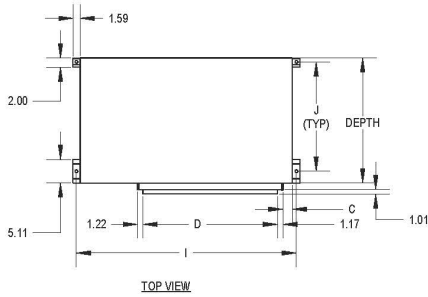
MODEL FRONT RETURN / TOP SUPPLY	A	B	C	D	FILTER SIZE
1500	37	48	25-1/4	5-7/8	25 X 25 X 1
1800	37	48	32-1/4	2-3/8	(2) 25 X 16 X 1
2200	41	48	36-1/4	2-3/8	(2) 25 X 20 X 1

- All sizes shown in inches.
- Right hand unit shown, left hand unit opposite.
- Coil connections determined by facing the supply air opening.
- Electrical junction box is located on the same side as the coil connections.
- Unit must be installed level and condensate drain lines should be trapped.
- Drain pan is powder coated epoxy with a 1/8" thick closed cell insulation and has 3/4" NPT primary and secondary drain connections.
- Entire cabinet, scroll and blower wheel are heavy gauge, galvanized steel.
- Coil connections: 3/4" CW on CV015-022 1/2" HW on CV015-022.

HIGH PERFORMANCE CASED VERTICAL

CV-G / CV-Q REAR RETURN / BOTTOM SUPPLY

400 - 3,000 CFM



MODEL CV-G CV-Q	A	B	C	D	E	F	G	H	J	K	L	M	R	FILTER SIZE
400	24 1/16	27 1/8	46	14	20	17 1/2	20	2 1/32	18	11 1/8	1	26	20 1/4	16 X 16 X 1
600	24 1/16	27 1/8	46	14	20	17 1/2	20	2 1/32	18	11 1/8	1	26	20 1/4	16 X 16 X 1
800	24 1/16	27 1/8	46	14	20	17 1/2	20	2 1/32	18	11 1/8	1	26	20 1/4	16 X 20 X 1
1000	30 1/16	27 1/8	46	14	20	17 1/2	20	5 1/32	23	11 1/8	1	32	20 1/4	20 X 20 X 1
1200	30 1/16	27 1/8	46	14	20	17 1/2	20	5 1/32	23	11 1/8	1	32	20 1/4	20 X 25 X 1
1500	38 1/16	27 1/8	46	16	22	17 1/2	20	8 1/32	29 11/16	9 1/8	1 3/8	40	20 1/4	25 X 25 X 1
1800	38 1/16	27 1/8	54	18	24	17 1/2	20	7 1/16	29 11/16	7 1/8	1 3/8	40	20 1/4	25 X 16 X 1
2200	46 1/8	27 1/8	60	20	30	22 9/16	25	8 3/8	37 11/16	5 1/4	1 3/8	48	20 1/2	25 X 20 X 1
3000	46 1/8	27 1/8	60	20	30	22 9/16	25	8 3/8	37 11/16	5 1/4	1 3/8	48	20 1/2	25 X 20 X 1

- Right hand unit shown, left hand unit opposite.
- Coil connections determined by facing the return air.
- Unit must be installed level and condensate drain lines should be trapped.
- Drain pan is powder coated epoxy with a 1/4" thick closed cell insulation and has 3/4" NPT CVG/Q04-18, 1 5/16" NPT (CVG/Q22/30) primary and secondary drain connections.
- Entire cabinet, scroll and blower wheel are heavy gauge, galvanized steel.
- Coil connections: 1/2" CW on CV004-006 3/4" on CV008-030; 1/2" HW on CV004-030.