

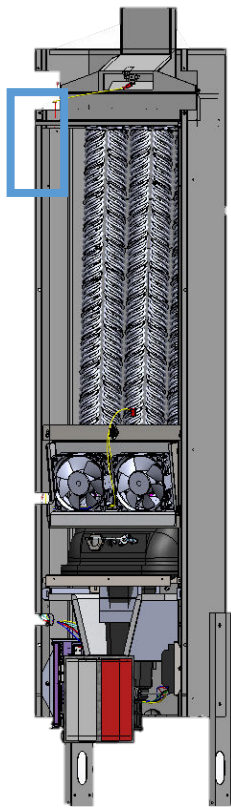
AC2030TN (Plug-In/No Battery) Troubleshooting Bulletin

Problem	Root Cause(s)	Corrective Action
Furnace gives "Error Limit Switch" during test fire of a fresh install.	A. Limit switch not connected. B. Vent presence switch not activated. TIP: Use a DMM to check continuity in the red and yellow header plate wires to see if the switch is pressed down by the vent.	A. Verify wire connections per manual. B. Verify header plate installation per manual.
Furnace calls for heat, but there is no flame. (Error Fire Three: 38)	A. Hot surface igniter failed (weak or no glow). B. Combustion fan not working. C. Furnace valve not opening.	A. Replace hot surface igniter. B. Plug in fan. Check for damage. B1. Replace fan. Use 4 in-lb. torque on screws. Fan shall sit flat against the gasket and cast iron with no room for leaks. C. Make sure all wires are connected. See manual for other options.
Thermostat plugged in and turned on, but screen is black.	A. Loose power cable or thermostat wire. B. Internal wire disconnected.	A. Push wire into terminal. B. Open back of thermostat and reconnect wire.
Thermostat plugged in and turned on, but screen flickers to black.	A. Power connection is not stable. B. DC power jack behind control module has a short.	A. Make sure thermostat wire is fully pushed in. A1. Check DC power jack behind control module. A2. Make sure wall plug is not loose B. Replace power plug.
Unit gives "Error Limit Switch" after normal operation.	A. Front panel and header plate are not installed correctly. B. Vent is not seated low enough on vent presence switch - it loosens with heat.	A. Refer to "Front Panel Installation" section in manual. See also Front Panel Fitment section below. B. Move header plate and vent to create better contact.
Thermostat gives low battery warning.	A. Harmless glitch.	A. Clear screen and proceed with use. If issue persists, replace thermostat.
Orifice (brass fixture) broken.	A. Too much torque applied to valve. Be mindful of leverage length when handling the valve connections.	A. Replace. Fix one wrench to valve inlet sleeve during fresh install. Twist in the gas inlet as you twist the valve in the opposite direction. Do not push or pull the valve during fastening.

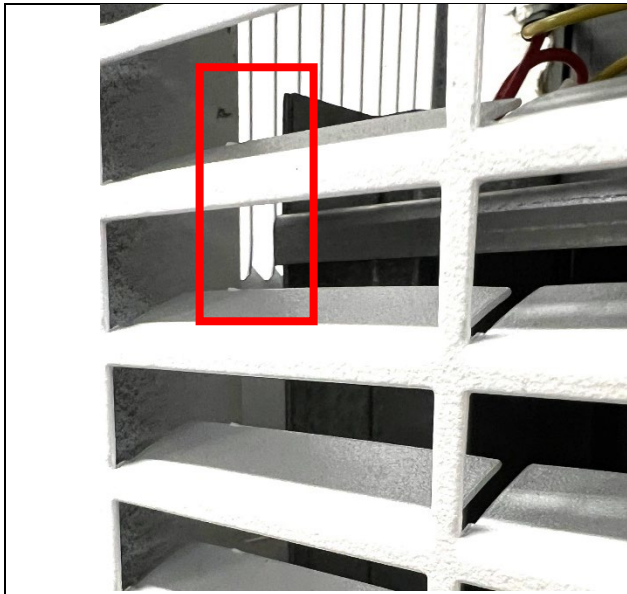
Install Pointers

- Header plate sits 62 ¼" from the bottom of the unit's legs. Even when the unit is lifted.
 - You should see about 2 ½" clearance from the header plate to the top of the furnace.
- Make sure the vent presence switch is clicked down from the vent and is fully connected.
- **DO NOT** use heavy force when threading any gas fixtures to the valve. Be mindful of the added length when moving the furnace into the wall. The longer the gas fixtures, the more leverage any force will have against the brass and break it.
- Verify your install by running three cycles on the unit.

Front Panel Fitment



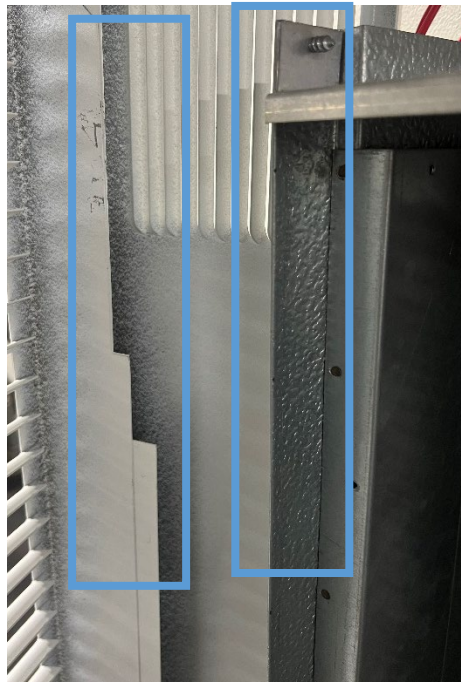
Pay special attention to the front panel's alignment with the highlighted section of the furnace.



Bad install: Gap between panel and furnace



Good install: No gap



Make sure panel lip wraps around furnace from top to bottom